



Technical characteristics M12 Power

Type	HARAX® M12 Power	M12 Power Crimp
------	------------------	-----------------

General data

Conductor cross section	0.75 – 1.5 mm ² AWG 18-16	0.5 – 2.5 mm ² AWG 20-14
Cable diameter	5.8 - 13.5 mm	5.8 - 13.5 mm
Temperature range	-40 °C ... +85 °C	-40 °C ... +85 °C
Degree of protection	IP65 / IP67	IP65 / IP67
Mating cycles	500	500
Recommended tightening torque / Hexagonal wrench	0.6 Nm / SW 17	0.6 Nm / SW 17

Electrical characteristics

Rated current	12 A	16 A
Rated voltage	63 V DC	63 V DC

Materials

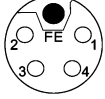
Contact material	Copper	Copper
Contact plating	Gold	Gold
Contact carrier material	PA	PA
Housing material	ZP410	ZP410

L-coding



Male, 5 poles

L-coding



Female, 5 poles



Identification	Part number	Drawing	Dimensions in mm
----------------	-------------	---------	------------------

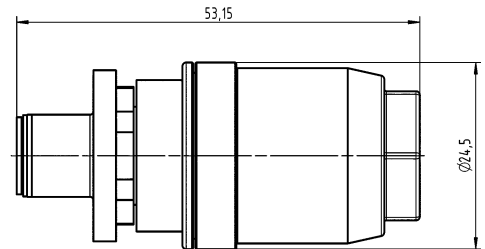
M12 Power Crimp



Male

5 poles, L-coding

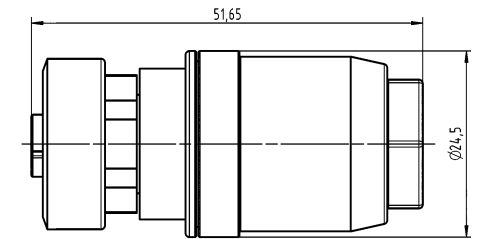
21 03 896 1505



Female

5 poles, L-coding

21 03 896 2505



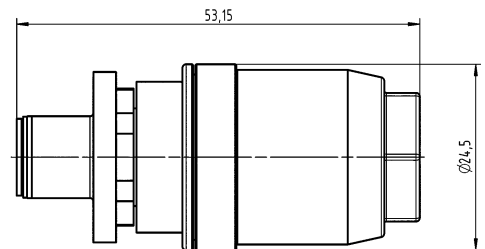
M12 Power HARAX®



Male

5 poles, L-coding

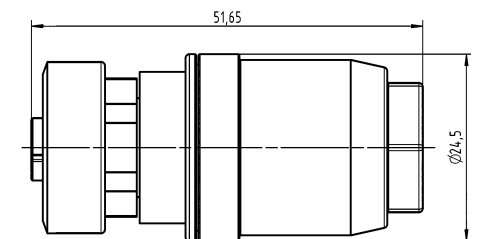
21 03 296 1505



Female

5 poles, L-coding

21 03 296 2505



M12 Power Panel feed-through

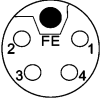


L-coding



Male, 5 poles

L-coding



Female, 5 poles



Identification	Part number	Drawing	Dimensions in mm
----------------	-------------	---------	------------------

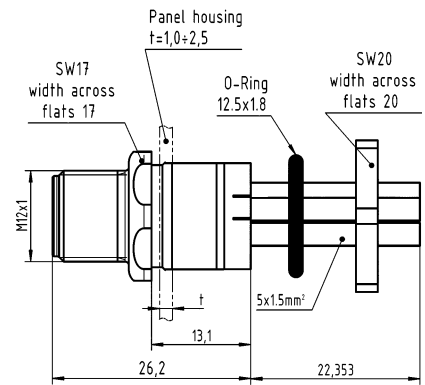
M12 Power Panel feed-through



Male

5 poles, L-coding
30 cm conductors, 1.5 mm²
30 cm conductors, 2.5 mm²

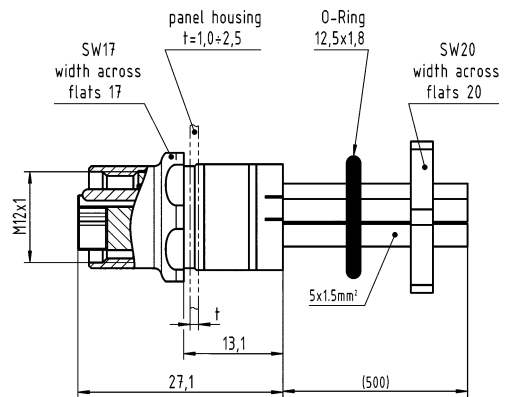
21 03 596 1505
21 03 599 1505



Female

5 poles, L-coding
30 cm conductors, 1.5 mm²
30 cm conductors, 2.5 mm²

21 03 596 2505
21 03 599 2505



M12 Power PCB adapter



L-coding



Male, 5 poles



Identification Part number Drawing Dimensions in mm

M12 Power PCB adapter male

M12 Power PCB adapter



Packaging: 60 pieces in a tray
Order housings separately

Male

5 poles, L-coding

21 03 396 1505

Housing



Packaging: 60 pieces in a tray

for rear mounting
for front mounting

21 03 302 1000

21 03 302 1001

M12 Power PCB adapter
incl. housing



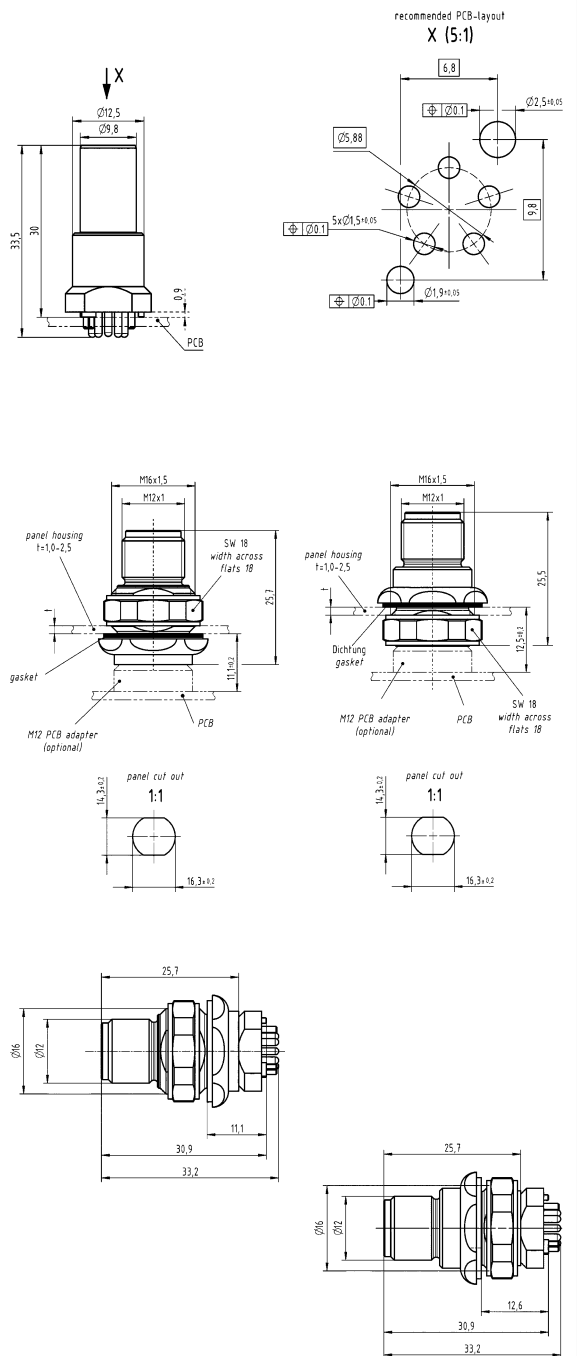
Packaging: 1 piece incl. housing

Male

5 poles, L-coding
for rear mounting
for front mounting

21 03 396 1530

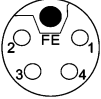
21 03 396 1531



M12 Power PCB adapter



L-coding



Female, 5 poles



Identification

Part number

Drawing

Dimensions in mm

M12 Power PCB adapter female

M12 Power PCB adapter

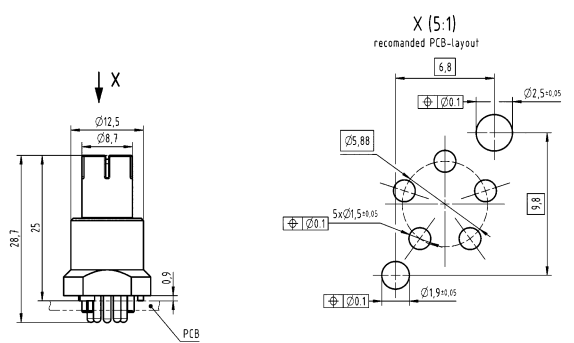


Packaging: 60 pieces in a tray
Order housings separately

Female

5 poles, L-coding

21 03 396 2505



Housing

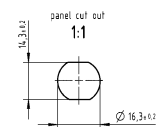
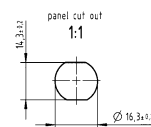
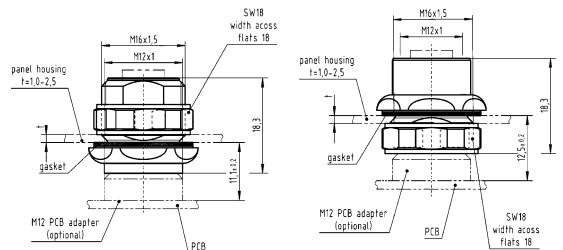


Packaging: 60 pieces in a tray

for rear mounting
for front mounting

21 03 302 2000

21 03 302 2001



M12 Power PCB adapter
incl. housing



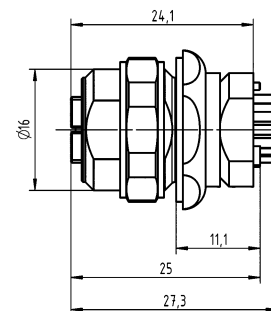
Packaging: 1 piece incl. housing

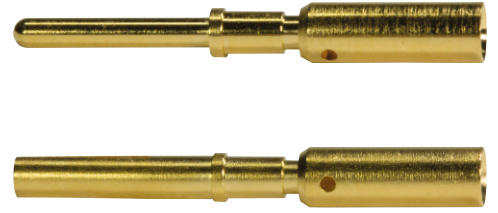
Female

5 poles, L-coding
for rear mounting
for front mounting


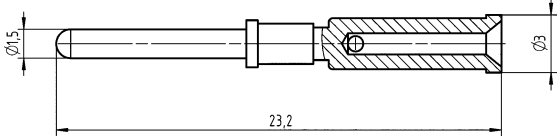

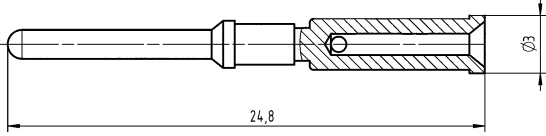

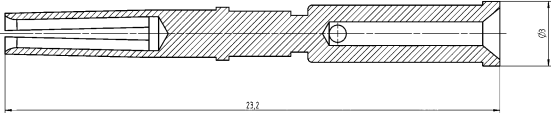
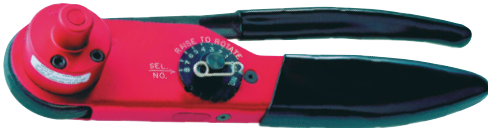
21 03 396 2530

21 03 396 2531





M12 Power crimp contacts

Identification	Part number	Drawing	Dimensions in mm
M12 Power individual contacts			
 Turned male contacts 23.2 mm length AWG 21 / 0.5 mm ² AWG 20 / 0.75 mm ² AWG 16 / 1.5 mm ² AWG 14 / 2.5 mm ²	21 01 100 9923 21 01 100 9924 21 01 100 9925 21 01 100 9926		
 Turned FE* male contacts 24.8 mm length AWG 21 / 0.5 mm ² AWG 20 / 0.75 mm ² AWG 16 / 1.5 mm ² AWG 14 / 2.5 mm ²	21 01 100 9927 21 01 100 9928 21 01 100 9929 21 01 100 9930		
 Turned female contacts 23.2 mm length AWG 21 / 0.5 mm ² AWG 20 / 0.75 mm ² AWG 16 / 1.5 mm ² AWG 14 / 2.5 mm ²	21 01 100 9931 21 01 100 9932 21 01 100 9933 21 01 100 9934		
Hand crimp tool	09 99 000 0509		
Positioner (To be ordered separately)	09 99 000 0638		

*FE: function grounding